

A photograph of a road lined with trees at sunset. The sun is low on the horizon, creating a warm, golden glow that filters through the bare branches of the trees. The road is paved and has a double white line down the center. The trees are mostly without leaves, suggesting late autumn or winter. The overall mood is peaceful and scenic.

the MOUNTS

THE COMMUNITY NEWSLETTER OF MT WILSON AND MT IRVINE

August
2017



IN AUGUST'S ISSUE

04

AROUND THE MOUNTS

Local news from around Mount Wilson and Mount Irvine

13

FEATURE ARTICLE - COMMUNITY FIRST RESPONDERS

Volunteers provide immediate medical assistance

15

MOUNT WILSON MOUNT IRVINE HISTORICAL SOCIETY NEWS

All the latest from the MWMIHS

16

RFS NEWS

All the latest from the Brigade for the upcoming fire season

20

THE WALKS OF MOUNT WILSON

Robbie Feyder walks the Chinamans Hat and Pheasants Cave

23

THE PATCH

Snowpea and Radish Salad

23

THE BOOK REVIEW

Alison Halliday reviews
Imagine Me Gone by
Adam Haslett

25

ATN*

The column formerly known
as "Ask the Neighbours"

This month's cover photo was taken by
David Howell of the Avenue during July.
If you would like to send in a cover photo for
the next edition please send it through to us at
themounts2786@gmail.com

AUGUST 2017



*Photos: Sunset over the
Avenue on a mid winters
evening walk*

As we come to the end of Winter, it seems poignant to reflect on the loss of several well known and respected community members. It is with great sadness that we report the passing of Judy Wardell, Bill Scrivener and Douglas Bensley Burgess. Our thoughts are with their family and friends during this sad time.

As the first signs of Spring start to appear around the mountain, the community is beginning to gear up for a busy Spring season. The Spring Blossom Festival will soon be upon us which brings a new flush of visitors and heralds the reopening of many gardens.

The Historical Society will also be re-opening the Turkish Bath for the Spring season and the MWPA is preparing for their AGM in September.

Finally the RFS is starting their preparations early for fire season due to the dry conditions. I would also like to take this opportunity to welcome Peter Laving as the new Community Engagement Officer for the RFS.

As with so many things in our area, the Mounts relies on contributions from the community to make it what it is, so we'd like to ask again for submissions. With so much going on in the local area, it's important that we cover as much can.

I hope you enjoy the August edition

Jess Delbridge

AROUND THE MOUNTS

COMMUNITY CALENDAR

AUGUST	SEPTEMBER	OCTOBER
Friday 11th Bushcare 9:00-12:00 Hay Lane	Friday 8th Bushcare 9:00-12:00 Hay Lane	Sunday 8th Church Service St Georges 3:00pm
Sunday 13th Church Service St Georges 3:00pm	Sunday 10th Church Service St Georges 3:00pm	Friday 13th Bushcare 9:00-12:00 Queens Ave + Wynnes Rocks Rd Cnr
Friday 18th Bushwalk	Friday 15th Bushwalk Leura Castle Head	Friday 20th Bushwalk
-----	Saturday 16th Progress Assoc. AGM Village Hall	-----
-----	Saturday 23rd / Sunday 24th Spring Blossom Festival	-----

BIN CALENDAR

3 RD AUGUST
10 TH AUGUST
17 TH AUGUST
24 TH AUGUST
31 ST AUGUST
7 TH SEPT
14 TH SEPT
21 ST SEPT
28 TH SEPT

SEARCH, SELL AND SHARE

7 ton electric log splitter. It has a hydraulic leak but is still working although somewhat slowly.

If you think you can fix it it is free with pickup from the Cabin Mt Wilson. Call Martin Barge 0439827305

- Martin Barge

Seeking - Left over / scrap timber for amateur woodworking projects. Happy to pick up - thanks!
Phone 47562063

- Ash Phillips

JUDITH (JUDY) WARDELL (APRIL 1926-JUNE 2017)



The majority of Mount Wilson residents who knew her found Judy Wardell to be a smart, charming, beautifully gentle woman. I knew her well and dispute this .. just slightly! Whilst she was indisputably smart, and she was really charming, and she was absolutely a gentle woman, she was also determined and strong. Her son, Timothy, describes her as 'indomitable' which indeed she was.

Judy graduated from Sydney University, obtaining Bachelor of Medicine and Surgery degrees. She then travelled to London as a ship's surgeon. It was on this trip that she first met her life partner to be, Tony Wardell. In London Judy obtained a Diploma of Ophthalmology from The Royal College of Surgeons of England.

She eventually returned to Sydney on yet another ship and again as the ship's surgeon. It just so happened that Tony Wardell had been assigned as the First Officer on that same ship! They were married in 1954.

Judy set up a private ophthalmology practice in Sydney from which she continued to work for many

years. She also voluntarily gave her services to Lewisham Hospital.

Tony and Judy were both passionate gardeners. This passion eventually led to them buying 5 acres of vacant land in The Avenue now known as 'Ashridge'. While they were designing and building both the house and garden at 'Ashridge' they lived in another Mount Wilson Property, 'Farcry'.

I refer to Timothy's description of their commercial 'ventures'. I was aware of them running 'The Post House Café' for several years and remember many happy times there. Evidently prior to that they started the Mount Wilson Berry Company through which they grew and sold raspberries to a number of Sydney's best restaurants. Then they went into the holly trade and sold car loads of holly to Sydney florists at Christmas time.

Timothy says how surprised he was when they bought 'The Post House Café'. Judy was not the most dedicated cook and Tony was not one to accommodate difficult customers! Evidently the main reason for the purchase was to stop anyone else buying it and making changes of which they might not approve. The venture succeeded with the café being open on weekends and public holidays.

Eventually the garden became too much for the 2 of them so they sold and moved to Sydney in the early 2000s. A group of us met regularly for lunch in Sydney after that. We always had much to talk about, with Tony and Judy pressing us for news of Mount Wilson. We all enjoyed these gatherings immensely. Even after Tony died Judy continued to join us.

They are both missed.

- Susie Hope

TRIBUTE TO BILL SCRIVENER

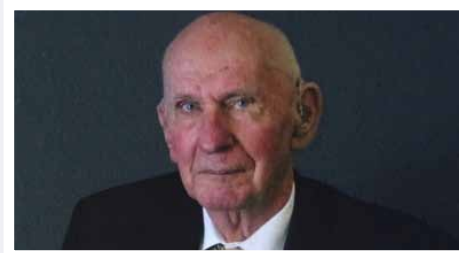
There will be many who wish to honour Bill Scrivener for he has left a lasting impact on the Mt Irvine Community over his 92 years and on the community of Mt Wilson. Mt Irvine was his life and soul and he remained ever dedicated to it.

The Historical Society is very conscious of his part in its life. He was a Life member along with Ruth. Who could forget the year 2001 when the Society celebrated the Centenary of Federation in the Mt Irvine Hall recognising the memorable contribution made by Bill's Grandfather Charles Robert Scrivener to the Commonwealth of Australia. We are saddened by Bill's passing on 11th July 2017 but deeply touched by the legacy he has established in our communities. We wish to honour that and celebrate his long and rewarding contribution in farming ,agriculture ,and the Rural Fire Service in the days when it was called the Bush Fire Brigade. There are so many stories from that Era.

His life expressed the history of Mt Irvine from its founding year in 1897 when his father, Charley along with Harold Morley and Basil Knight-Brown fought their way to the basalt covered mountain and began the back breaking task of establishing a rural existence isolated and far from civilisation of those days. Bill's contribution to the veterinary world, the wool industry and the production of chestnuts and walnuts was highly regarded and respected far beyond Mt Irvine and Mt Wilson. There are others who can speak in greater depth and detail of Bill but I personally as would my late husband Ellis will remember always with warmth and friendship his loyalty, dedication and sacrifice in the years he was Captain of the BushFire Brigade especially in 1994. He and Ruth have remained true to the history of our mountains in all their unique aspects and values.

- Mary B. Reynolds Mt Wilson Mt Irvine Historical Society.

DOUGLAS BENSLEY BURGESS (19.08.1924 - 11.07.2017)



This is a small excerpt from Dad's Eulogy given at the Celebration of his well lived life.

Dad enjoyed his four and half years at Mt Wilson although the cold was a challenge for him along with his loss of sight and hearing. He loved attending functions in the village and having people talk to him even though he had lost the art of conversation. Dad surprised us on occasions such as when, one morning he announced that I (Helen) did not have to cook any more as he had qualified as a chef overnight obtaining his certificate. He thought it was a great joke.

He would beat us to the door if we said we were going anywhere, it was his greatest joy in later life, and McDonalds became a favourite place for lunch. On driving down the road he would always say "Goodbye Buster (the long gone family dog) look after the place till we get home." I am sure the residents of Mt Wilson and Mt Irvine would be surprised to know that the Zig Zag was renamed by Dad as Violet's corner because mum was always frightened the car would go over the edge of the road. He always said hello to Violet whilst going around the corner and on return.

Doug was devoted to his family, lived by high standards and morals, and was very fortunate to reach almost 93 years of age.

We miss you Dad.

- Helen Freeman

MT WILSON SPRING BLOSSOM FESTIVAL 23 AND 24 SEPTEMBER 2017

The Mt Wilson/Mt Irvine RFS major fundraising event for the year is nearly here and involves a weekend of open gardens, art and photography in the Village Hall, and legendary Mt Wilson catering.

Eight gardens will be opened by their owners who very generously donate the gate takings towards the valuable work of the RFS.

You can help too! Here's how:

- Distribute flyers and posters spreading the word in the lead up to the Festival. Contact Sarah Howell: sarahhowell@ozemail.com.au
- Tell all your friends and colleagues and encourage them to come up during the weekend.
- Offer your help for a shift or two serving food at the café at the Hall or at the Sausage Sizzle at the Mt Wilson Fire Station. Contact Lesley Wilson: lesley@stacklaw.com.au
- Volunteer a few hours selling tickets and assisting visitors on a garden gate. Contact Judy Tribe: judithtribe@gmail.com
- Qualified RFS drivers (MR licence) can assist with driving the shuttle bus around the village. Contact David Howell: howelldj@ozemail.com.au
- Purchase tickets to the Festival Launch Event to be held in the Hall at 6.30pm on Friday 22 September.
- Purchase tickets to view Open Gardens, some of which are rarely open to the public.



Tickets available on Try booking:
www.trybooking.com/pcyw
(Early bird rate available until 21 September)

The Spring Blossom Festival weekend promises to be a major drawcard for visitors and vital fundraiser for our local RFS. Join in the fun and support your local Brigade.

- Sarah Howell

BOWENS CREEK FIRE TRAIL UPDATE

THIS IS AN UPDATE BY ELIZABETH MONTANO ON BEHALF OF THE MT WILSON/ MT IRVINE RURAL FIRE BRIGADE AS LEAD COMMUNITY ORGANISATION ON THIS ISSUE.

In our last update we reported that the Mayors of Blue Mountains City Council and Hawkesbury City Council agreed in May to undertake the feasibility study into the Bowens Creek emergency services vehicles access route.

Since then, as a central stakeholder we have made regular contact with BMCC seeking to be involved in the study. We've also been liaising with RFS District Office and NSW Ambulance.

The latest advice we have from BMCC is that:

"Hawkesbury City Council (HCC) have commissioned, at their own expense, a scoping exercise to help them develop a quote and scope of works for the investigation project. This is to provide the information necessary to support a grant funding application to the Federal Government and for funds to be made available for the investigation study.

HCC have informed us that they have not yet received any funds from the Federal Government for the investigation. As such, the project has not commenced.

Blue Mountains Council technical staff have provided input into a 'scoping' exercise, and our contribution has included advice to HCC that consultation with the local community should be an important part of the future investigation study.

I have contacted the relevant Director from Hawkesbury City Council, and he has informed me that this consultation with the local community will form part of any future investigation study.

As HCC have currently no funding from the Federal

Government, there is no timing that BMCC can provide on when this consultation would occur.

HCC have advised that they are close to being able to lodge the appropriate information to secure the grant, but the timing for this funding being available, and a suitable consultant being able to be commissioned, are not at this stage known.

However, BMCC can commit that when we are aware of the timetable for the project, including consultation, we will be in contact to provide ... this information.

... Council looks forward to working with the local community to ensure that there is opportunity for involvement in the upcoming investigation study, which HCC are leading."

While it is positive to see that work is progressing, as you can see from this BMCC advice there is still a long way to go in, firstly, getting to provide our unique perspective to the feasibility study and then, if it proves to support the restoration of the route, seeing funding allocated for the route to be restored.

In the meantime, our community and the visitors to our area are at risk of being cut off from emergency services in the event that Mt Wilson Rd – our one road in and out of Mt Wilson and Mt Irvine – is closed due to a severe weather event or a major vehicle accident and aerial assistance is unavailable.

So, it remains essential that we continue to remind our local, State and Federal representatives of our situation. It is in their power to reduce the risks to our community by getting this feasibility study done quickly with the benefit of effective consultation and then move on to identifying and accessing funding for the restoration work.

- Elizabeth Montano
Member of the Executive
Mt Wilson/ Mt Irvine RF Brigade

AROUND THE MOUNTS

THE FABULOUS MOUNT WILSON YULEFEST AT THE VILLAGE HALL

Thanks to everyone who came to the Yulefest on Saturday 8th July. From all the feedback, a really fun night was had by all.

We had a fantastic team to make such a successful night. Many thanks to the cooks who helped me, Helen, Mib and Beth and Ted as MC. We all thought we knew all there was to know about wombats and furry and feathered friends, but Robbie Feyder posed questions which showed us how wrong we were and we now know much more. Lachlan and Hannah Mayne did a wonderful job drawing the raffle prizes. Lastly Duncan Peppercorn initiated us to the mysteries of 'A Milba' with the highest bidders in the auction for Milba's puddings being Michael Pembroke, Ted Griffin and a joint bid by Paul Hunyor and Mary Holt for a record price.

And grateful thanks to the washing up volunteers at the end!

A delightful way to enjoy our community and raise funds for improvements the Mount Wilson Village Hall.

- Judy Tribe, Chair, Mount Wilson Village Hall Committee

MT WILSON PROGRESS ASSOCIATION AGM

The annual general meeting of the Mt Wilson Progress Association will be held on Saturday 16 September 2017 in the Village Hall. This meeting will bring you up to date with all that has happened over the last months as well as providing you with an opportunity to express your own concerns and interests.

The draft minutes for the 2016 AGM and the GM 2017 can be found on the Mount Wilson website under Mount Wilson Progress Association and then Administration and Projects. Should you wish to have a copy of these minutes with you at the meeting please print them and bring them along.

The Committee hopes you will join us for wine and cheese after the meeting.

REMEMBRANCE DAY 2017

Every year the community from Mt Wilson and Mt Irvine gather at the War Memorial at about 10.40 am to remember the sacrifice and celebrate the lives of those listed on the Memorial. There will be a brief service, followed by a memoir of one or two of those listed on the Memorial; and then morning tea.

You are all warmly welcome and as this year Remembrance Day falls on a Saturday I hope that many of you find time to come. The order of service will be dropped into your letter box a week or so before the date.



COAL MINER CLARENCE COLLIERY FINED \$1 MILLION FOR MAJOR WOLLANGAMBE RIVER SPILL IN BLUE MOUNTAINS

Coal miner Clarence Colliery has been fined more than \$1 million for a major spill which polluted a river in the world-heritage listed Blue Mountains.

More than 200 tonnes of coal material had to be cleaned up from the Wollangambe River after a holding cell overflowed at the mine, near Lithgow, in 2015.

The collapse sent a slurry of water and coal particles called “coal fines” into a nearby watercourse, which found its way into the river.

Fine coal particles affected a 10-kilometre stretch of the river, turning the water black in places.

The extensive rehabilitation operation of the contaminated land and water took 12 months and involved specialist teams working in isolated and rugged conditions.

Clarence Colliery pleaded guilty to two charges brought by the Environment Protection Authority (EPA) and the Office of Environment and Heritage.

The company, a subsidiary of Centennial Coal, was fined \$720,000 for the first offence, which is a record amount for the EPA.

The second offence carried a penalty of \$330,000.

The company was also ordered to pay investigation and legal costs, which could bring the total amount to almost \$1.5 million.

In handing down his sentence in the Land and Environment Court on Friday, Justice John Robson noted the company's early guilty plea.

The miner has also apologised for the incident and spent nearly \$2 million cleaning up the area.



EPA chief executive Barry Buffier welcomed the penalty, saying it reflected the seriousness of the spill.

“It’s a World Heritage Area and the Wollangambe River is an integral part of that, so this amount of pollution going into that river is very, very significant,” he said.

“If it hadn’t been taken out it would have taken many, many years to restore it.”

The court ordered the \$1.05-million fine be paid into the NSW Environmental Trust, an independent body that funds organisations to undertake restoration and rehabilitation programs in the public and private sectors.

“[The trust] will use that money to fund further environmental projects which are going to benefit the local environment,” Mr Buffier said.

- Jade Macmillan Via ABC News

Photo: An EPA officer and bushwalkers inspect the Wollangambe River after the wall collapse at Clarence Colliery.

FUR AND FEATHER RESIDENTS OF THE MOUNTS : A CHICKEN NAMED EDITH

In May 2016, Ash and I brought 3 chickens from Bedwell's produce store in Wallerawang. We named them Willa, Melba and Edith and over the past year and a bit they have continued to surprise and delight us with their personalities and antics.

Edith is the palest of the three and is also the lowest in the ladies pecking order however, she seems to be the most resilient, the most cunning and our best layer. Her eggs are huge, almost double the size of store bought eggs, some weighing in at a whopping 85g and she has an appetite to match.

Forever following us around the garden or standing at the back door waiting for a treat, she isn't afraid of us in the slightest, allowing us to pick her up or give her feathers a ruffle. The only issue is she is continually under your feet or standing by to snatch a tasty grub from under your shovel leading to some close calls.

Seemingly undeterred by potential dangers, she is forever wandering off on her own or putting herself in harms way looking for treats. She has learnt that the others will steal from her if they see she has discovered something, so she quietly departs and manages to find her way into situations she really shouldn't be in.

One evening in May, Ash came running into the house to announce that Edith was missing from the hen house. At sundown the girls will take themselves to bed but that evening Edith wasn't with the others.

Fearing the worst (foxes, dogs or hawks) we grabbed torches and headed off to search for her, looking up into the trees and searching nearby bushes looking for our roosting chook. We jumped the fence to continue our search after we found no trace of



her in the yard. Our efforts turned up no sign of her and so defeatedly we headed for the house. As we passed the vege patch, which is fenced in to deter the lyre birds and other wildlife, we heard a quiet 'Brrrrck'. Turning my torch beam towards the noise to my great relief we discovered Edith snoozing underneath the rhubarb. She had managed to eat her way through the majority of our winter vege seedlings, and anything which wasn't devoured had been uprooted by her scratching. We still have no idea how she got in there.

Although their antics can be frustrating at times, the rewards of having the chooks far outweigh the negatives. Aside from the wonderful eggs we get everyday they make wonderful gardening companions and are endlessly entertaining.

- Jess Delbridge

WHAT'S ON AUGUST / SEPT 2017

GARDEN OF WINTER WONDER - MT TOMAH BOTANIC GARDENS

When: Every day until Thu 31 Aug 2017 9.30am – 4.30pm

Cost: \$6.50 per kit

Great for the grandkids! Can you follow the map to find the five secret locations? Explore the Garden, enjoy hands-on activities and learn some delicious and disgusting things about plants. Answer all the quiz questions, solve the puzzle and win a prize! Suitable for children 6 – 13 years.

Location: Visitor Centre

Blue Mountains Botanic Garden Mount Tomah



WILD GARDENS OF THE BLUE MOUNTAINS BOTANIC GARDEN

Domestic gardens are designed by gardeners whilst wild plant communities arise from natural processes. In this exhibition Ian Brown explores the richness and beauty of wild Blue Mountains bush in fine art photographs ...from leaf, bark and flower to massive eucalypts, rainforests and heathland.

Free entry - Blue Mountains Botanic Garden

Sat 02 Sep 2017 - Sun 22 Oct 2017 9.30am - 4.30pm



TARANA COMMUNITY FARMERS MARKET

When: Sun 27 Aug / Sun 24 Sep 10am – 2pm

Come along and join in the fun of the Community Farmers Market.

Seasonal fruit and vegetables, lamb, pork, beef, jams, wine, brewed beer, bread, chocolates, coffee, bacon and egg rolls plus a huge range of items that have been grown, produced or made in our local area.

Location: Fire Shed, below Tarana Hotel, Main Street, Tarana





FEATURE ARTICLE

.....

VOLUNTEERS PROVIDE IMMEDIATE MEDICAL ASSISTANCE

A dark and stormy night. A medical emergency in Mt Wilson or Mt Irvine and a Triple Zero call is made. Anticipating a long and worrying wait while an ambulance comes from Lithgow, within minutes of the call a familiar face appears with a calming smile, a bag full of advanced medical equipment, and reassurance that the ambulance is on its way. It is a member of the Mt Wilson and Mt Irvine Rural Fire Brigade's Community First Responders.

In 2007, the Mt Wilson and Mt Irvine Brigade was proud to be selected as the first Brigade in New South Wales to trial a pilot program devised as a practical solution to the health needs of remote communities where an ambulance can take half an hour or more to attend a medical emergency.

In a joint initiative of the NSW Ambulance Service and the RFS, volunteers from the Brigade who were already senior First Aiders were invited to train in first response skills which could save lives while waiting for ambulance officers to arrive. Community First Responders do not operate from a NSW Ambulance or health facility, do not have an ambulance vehicle and do not transport patients, but operate from a customised RFS vehicle which is fully equipped to provide advanced life support.

First Responders are qualified to administer CPR techniques and defibrillation in the case of heart attacks, and to administer specified medications. They are able to deal with diabetic emergencies, anaphylaxis (severe and life-threatening allergic reaction), and monitor vital signs until the arrival of

FEATURE ARTICLE

.....



qualified medical assistance. Another vital part of the First Responder's role is to meet the ambulance and escort it to the patient to ensure no time is wasted looking for confusing addresses in the villages. They are trained to locate and operate all equipment on an ambulance to assist the paramedics once they arrive.

In the case of a medical emergency the immediate response should be to ring 000. This simultaneously triggers a call to the ambulance and a page to the First Responders who can respond to the patient immediately.

Photos previous page: Some of our Community First Responders outside the RFS station

Photos this page: Linda Raines goes for volunteer ride along in Lithgow with the local Ambos, pictured with trainee paramedic 'Will'

.....

Mt Wilson and Mt Irvine CFRs are well placed to provide medical assistance already having a defibrillator, and two oxygen resuscitation units purchased with community donations. Certified First Responders are supplied with a personal kit and the brigade will also have a kit kept at the station. The Ambulance Service provides the Brigade with portable radios to enable the First Responders to brief paramedics on the patient's status and receive advice while the ambulance is travelling towards them.

All members of the Mt Wilson and Mt Irvine CFR team are trained to the equivalent level of an ambulance officer and have a great reputation within the NSW Ambulance Service. In compulsory monthly training sessions run by ambulance officers, CFRs are trained to make primary assessments, take the patient's history, deliver a report to the Lithgow paramedics, and then lead the ambulance to the patient to ensure the fastest response. Patient privacy is of paramount importance and Community First Responders are not permitted to ever discuss any aspect of a job they have been called to.

Seven members of the Mt Wilson/Mt Irvine RFS perform this valuable community service: Barry Freeman, Diana Landsberg, Beth Raines, Peter Raines, Linda Raines, Robyn Hyde and Allen Hyde. The recent certification of Robyn and Allen brings an even faster response to the residents of Mt Irvine. Kathleen Oakes and Libby Raines have both recently retired having been part of the initial intake in 2007.

- Sarah Howell



MT WILSON MT IRVINE
HISTORICAL SOCIETY

MOUNT WILSON AND MOUNT IRVINE HISTORICAL SOCIETY

Recent Events and Comments

On the positive side the Society was able to send out a 17 page newsletter to its current members due to the expertise of Alison Halliday and her daughter ,Matilda. We are very grateful for the hours and work spent in its production. At the same time a renewal of membership for 2017 -2018 was included with the newsletter. So far the response has produced \$ 490.00 in donations and 41 renewals. The Society has 30 Life members.

Our plan for a workshop at the Study Centre in July had to be abandoned due to the low temperatures in that month.

With approaching Spring The Turkish Bath Museum will be opened each Sunday in September and October. We ask if our members could rally around to help with the roster on at least one of the following dates.

- Mary B. Reynolds
Vice President

TURKISH BATH OPENING DATES

Calling all volunteers! Can you open the museum on any of these dates?

To register for the roster Contact Mary Reynolds by email mary_reynolds@internode.on.net

Or By phone 4782 9882 or by mail Unit 5 / 2 Queens Road Katoomba 2789.

Sunday Sept 3rd 12.30 - 3.30pm (Father's Day)

Sunday Sept 10th 12.30 - 3.30pm

Sunday Sept 17th 12.30 - 3.30pm

Saturday Sept 23rd 12.30 - 3.30pm
(Spring Blossom Festival)

Sunday Sept 24th 12.30 - 3.30pm
(Spring Blossom Festival)

Sunday Oct 1st 12.30 - 3.30pm

Monday Oct 2nd 12.30 - 3.30pm (Public Holiday)

Sunday Oct 8th 12.30 - 3.30pm

Sunday Oct 15th 12.30 - 3.30pm

Sunday Oct 22nd 12.30 - 3.30pm

Sunday Oct 29th 12.30 - 3.30pm

RFS NEWS:

Your brigade is ready for fire season - are you?



FIRE PUMP

Serviced and operating properly, fitted with correct fittings Storz 25 x 38mm



GUTTERS / ROOF

Clear of all combustible material

FIRE HOSES

Suitable for purpose with correct fittings & able to reach all parts of the house



RADIO / PHONE

Battery operated radio and phone that needs no power



WATER

20,000 litres available for fire fighting, preferred outlets are 65mm Storz



AROUND HOUSE

Clear of all rubbish and combustible material

BUCKETS

Available for filling with water for spot fires



SURVIVAL PLAN

Have a plan so you can act quickly in an emergency



PREPARING FOR FIRE

Detailed information to assist you in preparing for a fire will be placed in every letter box mid - September. In the meantime please feel free to contact me if you require any information or assistance.

Peter Laving (Community Engagement Officer)
peter.laving@kumahira.com.au 4756 2004 0417 478 250

KEEPING INFORMED DURING A FIRE EMERGENCY

IMMEDIATE NOTIFICATION

- A fire emergency is declared when there is a fire somewhere in the vicinity of Mt Wilson / Mt Irvine that could pose a threat.
- As soon as an emergency is declared an email will be sent to all residents with the first Situation Report.
- The Community Engagement Officer will be advised and he will immediately contact the Street Coordinators.
- Street Coordinators will make contact with their resident group.

FIRE INFORMATION FROM SOURCES ON THE MOUNTAIN

From this point onwards residents have access to Information in a number of ways:

- Contacting your Street Coordinator
- Phoning Mt Wilson Fire Station (recorded message) 4756 2040
- At the Mt Wilson Village Hall FIRE INFORMATION CENTRE.
- From the FIRE INFORMATION notice boards around the mountain – see list below.

Please do not phone or visit the Fire Station during the emergency unless it is absolutely essential except on the recorded message line 4756 2040.

FIRE INFORMATION NOTICE BOARD LOCATIONS

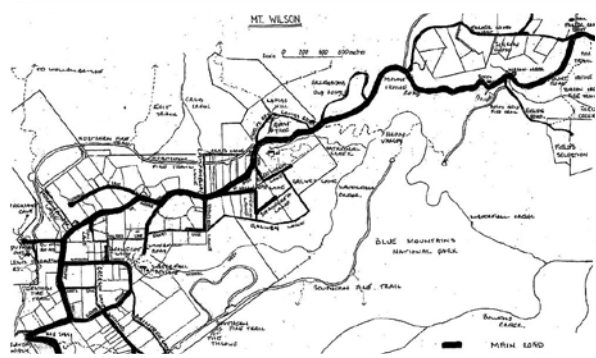
- Mt Irvine Village Hall
- Cnr Mt Irvine Road And Bowens Creek Rd
- Cnr Farrer Rd West And Mt Irvine Rd
- Cathedral Reserve
- Cnr Church Rd And The Avenue
- Mt Wilson Village Hall
- Cnr Queens Ave And Wynnes Rocks Rd

FIRE INFORMATION FROM EXTERNAL SOURCES

- RFS Bush Fire Information Line 1800 679 737
- NSW Rural Fire Service --- rfs.nsw.gov.au
- Fire Danger Ratings --- rfs.nsw.gov.au/fdr
- "Fires Near Me" --- Free smartphone app
- facebook.com/nswrfs
- twitter.com/nswrfs
- Local radio / emergency broadcaster frequency / TV.

STREET COORDINATORS

- Mt Wilson and Mt Irvine has been divided into seven areas each of which has one or two Street Coordinators who cover all the residents in their area. Their task is to assist the Brigade by checking on who is on the mountains during an emergency and to answer calls from residents.
- Before the start of the fire season all residents will be provided with contact details for their Street Coordinator.



IN THE CASE OF POWER AND TELEPHONE LINE FAILURE AT MT WILSON / MT IRVINE

Obtain information from:

- Fire Information Centre at Mt Wilson Village Hall
- Fire information notice boards
- Bushfire Information Line 1800 679737 if you have mobile reception
- Local radio if you have a battery operated radio.



VOLUNTEERS

- Any residents wishing to volunteer their service for non fire fighting duties should report to the FIRE INFORMATION CENTRE at the Mt Wilson Village Hall for registration and assignment .

Please do not call or visit the Fire Station during the emergency unless it is absolutely essential.



SERVICE YOUR FIRE PUMP

A community engagement initiative from the
Mt Wilson / Mt Irvine Rural Fire Brigade

The fire pump is a key component in your fire fighting arsenal and it should be serviced at the start of every fire season to ensure it is functioning efficiently. This is sometimes difficult and expensive to do so we have a plan that can assist you.

Lithgow Fire Protection have agreed to come to Mt Wilson/Mt Irvine on one weekend at the beginning of the fire season to inspect and service as many fire pumps as necessary.



PROPOSED WEEKEND

October long weekend – Sat. 30th Sep (this can be extended to Sunday subject to demand).

CHARGES

Basic service \$50.00. This includes:

- Check all parts incl. air filter, spark plug, oil and fuel quality.
- Tighten all nuts and bolts.
- Top up oil if required.
- Start up check.

Additional charges on the day if the following required; new spark plug, new air cleaner, new oil (full change), fresh fuel. Additional workshop charges if needed labour \$60.00 hour (normally \$80.00) + parts.

PAYMENT

Required on completion of service so you will need to be in attendance.

TO BOOK A SERVICE

Email Peter Laving (Community Engagement Officer) peter.laving@kumahira.com.au or phone 4756 2004 /

0417478250 and advise your preferred timing on the specified weekend.

SCHEDULE

When we have the first twenty bookings we will draw up a call schedule and notify you when your service will be done.

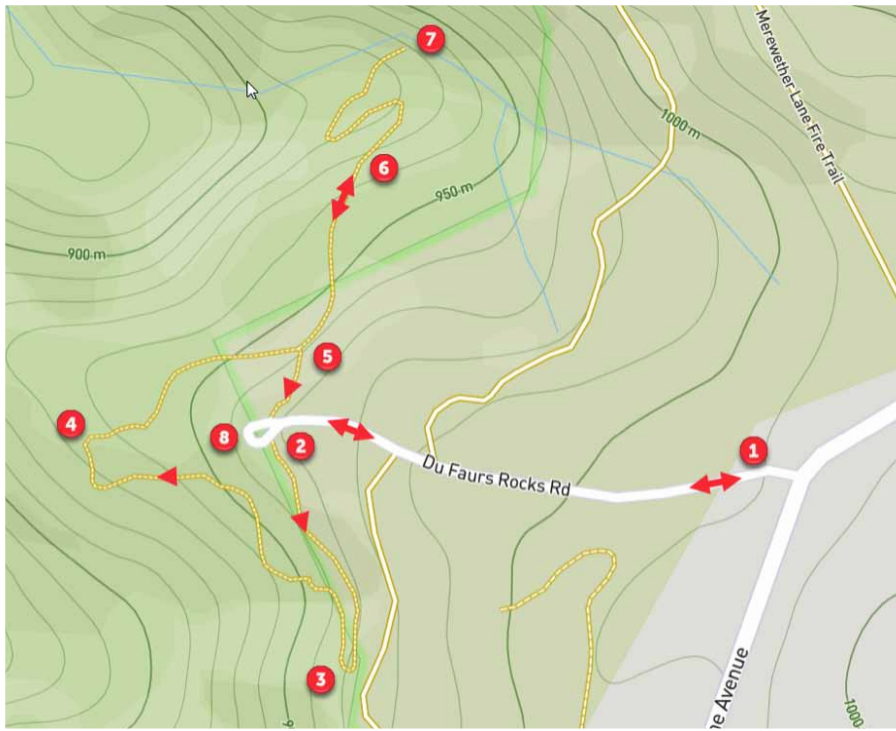
CONDITION

The special charge rate is based on us getting at least twenty bookings for the day. If we can't do this the charge would have to be reviewed or the offer withdrawn. We will keep you informed so you can make alternative arrangements with Lithgow Fire Protection if you wish.

BENEFITS TO YOU

- Your pump will be serviced by a professional fire service technician.
- You don't have to arrange the service yourself.
- You have the benefit of a special group rate.
- Lithgow Fire Protection are well known at Mt Wilson/Mt Irvine for providing fire protection services to the community and the RFS.





THE WALKS OF MOUNT WILSON

Chinamans Hat and Pheasants Cave

This is one of the most beautiful walks in Mt Wilson and provides spectacular views.

Notes below include extracts from the booklet "Mount Wilson Walks" by Libby Raines.

Chinamans Hat and Pheasants Cave

Walk Signage Colour: Red

Length: 3.7 km (circuit)

Elevation Change: 130 m

Time: 1 ¾ hours (1 hour if
exclude Pheasants Cave)

Grade: Easy/Moderate

Starting point:

Corner of Du Fours Rocks Road
and The Avenue, opposite the
Rural Fire Station.

Walking conditions:

- Well formed track.
- Very easy to take the wrong track so be alert for the signs

Highlights:

- Great views
- Cliff faces and caves
- Spectacular circuit walk

Photos this page: The Chinamans Hat and Pheasants Cave map and the start of Chinamans Hat Track at the bottom of Du Fours Rocks Road

THE WALKS OF MOUNT WILSON

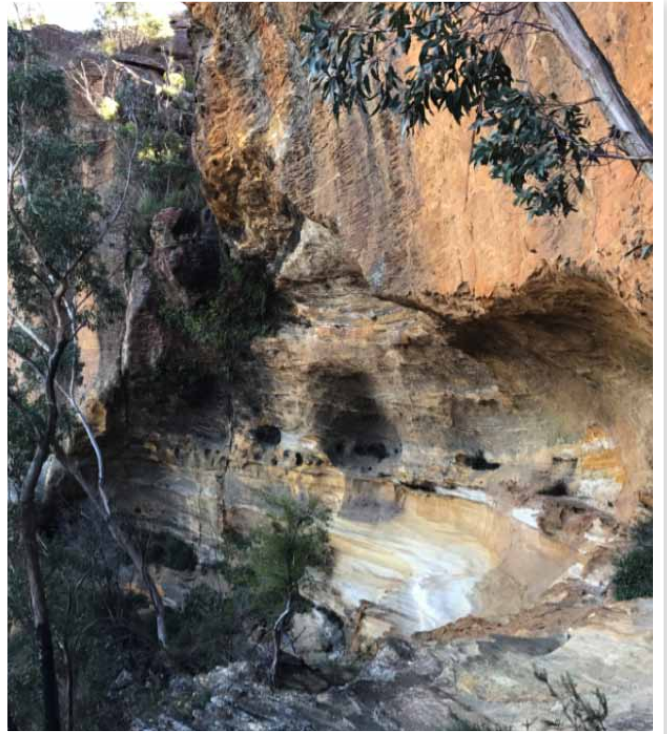


The track starts and ends opposite the fire station (1). Head down Du Fours Rocks Road. At the turning circle at the bottom of the road take the turnoff to the Chinamans Hat Track (2). As you walk along this well-formed track there are lovely views west. Note the Aboriginal markings on the rocks where they sharpened their tools and made little grooves for the water to run. It is wonderful to sit on Chinamans Hat (3) and enjoy the quietness and view part of the Wollangambe wilderness area.

The track heads down on the right hand side of Chinamans Hat. There are wonderful weather worn caves along this section of the walk. Be extremely vigilant for signs as the track splits at one point and the correct track heading right must be taken (4).

ALERT: It looks like the track goes straight, but you must turn right and follow the arrow at this point (4)

After turning right the track heads up a short rise to Castle Rock. Another sensational spot for spectacular views. A great spot to stop and soak up the views.



The track heads to the right hand side of the ridge above Castle Rock. The track follows contour lines below Du Fours Rocks Lookout and then meets up with the Pheasants Cave Track (5).

At this point you can head back to Du Fours Rock, but it is highly recommended that you go down to Pheasants Cave.

Pheasants Cave is a magical place. Allow 45 minutes return for this walk plus some extra time to spend in this charming cool bower. There are quite steep steps on part of this bush walk. It is not recommended for wet weather. A path has been cut into the rocks and is well marked. There is a handrail at the steepest section (6) and this is especially useful when there is any moisture on the rocks. Once down to the stream, cross it and head to the right until you come into a small rainforest area where the water falls over the edge of the rocks. The cave is beyond the fall and has been frequented by lyre birds (early explorers mistook these as pheasants) (7).

Head back up the same track until you get to the

THE WALKS OF MOUNT WILSON

.....

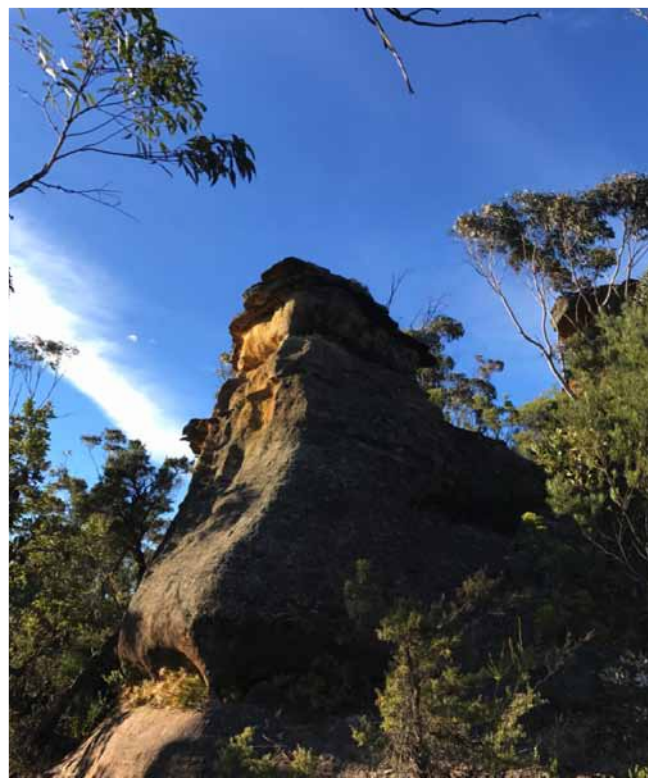
junction of the Pheasants Cave walk (5). It is then a short walk up to Du Fours Rocks Lookout (8). When you get to the road turn right and enjoy the spectacular views. The Wollangambe Canyon winds through the valley in front of you. To the left (South) you also get a view of Chinamans Hat. This is also a great place watch the setting of the sun as it faces directly West.

Head back up Du Fours Rocks road to complete the walk.

- Robbie Feyder

Photos previous page: The Chinamans Hat and the weather worn Cliffs along track past Chinamans Hat.

Photos this page: Approaching Castle Rock, views from Castle Rock, Pheasants Cave, Panoramic view from Du Fours Rocks Lookout (8)



THE PATCH

Snowpea shoot and radish salad

The winter patch can be a bit bare on the Mounts especially when it has been as dry as this season. We haven't had huge luck with our brassicas unfortunately, with them falling victim to a lack of water or being demolished by our chickens (see p11).

We have done well out of our radishes and snowpeas however. We have discovered that these easy to grow veges are hardy and best grown from seed, simply sow directly into soil rich with organic matter. The snowpeas require more water than the radishes, however if you keep your radishes well watered and pick them young they are less likely to turn out woody.

The snowpea shoots are just as delicious as the peas themselves and are great in salads and stirfrys.

This is a simple side salad made from these two veges which goes well with greek dishes or chicken.

- Ash Phillips and Jess Delbridge



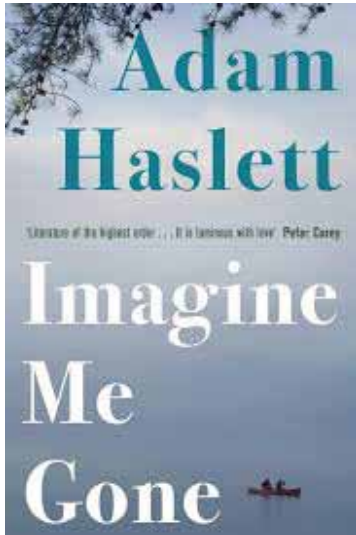
INGREDIENTS

- 1/3 cup Greek yoghurt
- 2 tablespoons lemon juice
- 1 small garlic clove, finely chopped
- Cracked pepper and salt to season
- 2 cups snowpea shoots
- 1 cup rocket or baby spinach
- 10 radishes, very thinly sliced

METHOD

Mix yoghurt, lemon juice and garlic in a bowl, then season. Toss shoots, radish and leaves in a separate bowl. Heap salad on serving plate then drizzle dressing over.





Imagine Me Gone by Adam Haslett explores the intricate and troubling lives of a trans-Atlantic family. Under a surface of holidays, work and small family matters lies unhappiness, desperation, a desire for unity and a search for continuity and assurance in the future.

IMAGINE ME GONE by Adam Haslett

.....

Margaret and John meet and marry, a rather unlikely event given they bring together different cultures and sensibilities, American and English. They have three children, the boys Michael and Alec, and between them a sister, Celia. The novel begins in the near present and then traces back through the pasts of all the family, in particular the children, as they grow, work, seek happiness and try to come to terms with their father's bitter and puzzling life, and the uncertainty and terror that dominates the life of Michael.

The novel resists clichéd or simple explanations for people's attitudes and experiences as they meet, part and try to reconcile and understand their various lives. The three parts of the novel shift between past and present and are narrated by the various members of the family. Each is searching for love both within and without the family, and as they try to understand themselves and each other they show loyalty and ultimately grace. The reader sees multiple views of the same event which enables greater understanding of the individual and hints at reasons for the inevitable misunderstandings of childhood times. Throughout they are determinedly loyal to each other and the ending, though low key is hopeful when that is not what we have come to expect.

These are ordinary people who show that in both the big events and the normal turmoil of life and being together and apart from each other, the power and responsibility of the family is ever-present.

- Alison Halliday

ATN*

The column formerly known as “Ask the Neighbours”

.....

Can you check The Mounts virtual mailbox again, Jess? I can't believe that our readers aren't more imaginative.

All the witty responses to last edition's column seem to have gone astray. Don't tell me that the only suggestion we got for the ringtone for the ATN Squad's HQ communications centre was a mash up of the Ride of the Valkyries and the theme from All Creatures Great and Small. I'm not saying that it isn't a catchy tune, especially with the added dance party beat. But it's hardly a classic theme which will endure over the generations.

No matter. As we say in showbiz, the show must go on. And so we will. What's that, Jess? When you checked the inbox you found resignations from ALL of the ATN Squad's cast and crew? They say they've gone off to a certain streaming service...where they will be appreciated as the true artistes they are? Where the fruit baskets have real fruit and the catering truck has actual food? The ingrates.

You take a bunch of drama school dropouts out of obscurity. You nurture their meagre theatrical talents; fanning them like little flames in a cold fireplace on a freezing Friday night. You get their

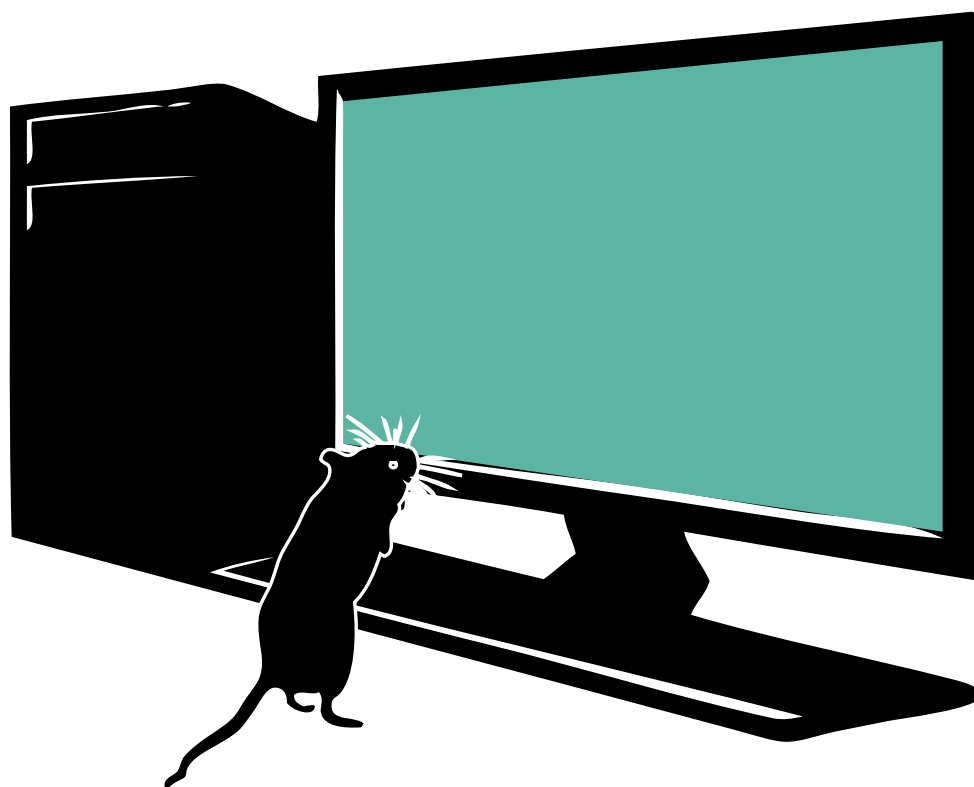
teeth capped and their eyebrows pruned. And what thanks do you get?

Well, we'll show them. Won't we Jess? We'll find a new cast. I'll get the scriptwriters onto it right away. I can see it now. The episode starts with the ATN Squad's Captain's girlish giggle. We'll re-master some lines from the outtakes of past episodes... then an explosion...BOOOOM! The entire ATN Squad is killed in a tragic accident.

Out of the smoke and falling debris comes the RAATS Squad. Yes. They're back. Bigger and bolder than ever. And even better than that Jess: their contracts have the tightest non-competition clauses ever drafted. Let's see them try to jump ship at the first sniff of fresh bagels at some la dee dah streaming service cafeteria. Those traitors from the ATN Squad will rue the day they crossed ATN Productions. I'll see they never work in this town...err...village ever again. The Mt Wilson/ Mt Irvine film and television industry is closed to them. They're on our black list. They're dead to us. They're.....

Briing briing...briing briing (that's a phone ringing- if only this column had audio). Sorry Jess. I have to take this call:

“Yes, hello. You have found the producer, director



and creator of the ATN Squad. What can I do for you?You mean you want the ATN Squad on your streaming channel? Well, I just don't know whether our unique genre of suspenseful drama will translate well into the world of binge viewing..... Sorry, how much did you say you're willing to pay for the screening rights?.... Each episode?Well, as you know, true art evolves with its audience. So, when do we start?"

Jess, Jess – you'll never guess. We're going streaming. What a thrill. I can see our new format now. What's that, Jess? What will we do about the cast we've just blacklisted? Jess, sweetie – you've got it all wrong. The cast and I aren't at loggerheads. A little creative tension is good for the artistic temperament. They're fine. I'm fine. We're all fine. Just you wait. This will be the making of the ATN Squad. And with the RAATS on board. Who know where we'll go? Game of Thrones? So last season. Just wait til we introduce the new story line

about the killer bees invading the Mounts' new call centre: Working title - "Game of Phones"; "Game of Drones"; "Game of ...?"

Now dear readers- you have a chance to redeem yourselves – what title should we give to our new spin off for our streaming service friends?

- Elizabeth M

"Real Crime" Editor

* ATN Productions, still a Subsidiary of Bread and Circuses (Cayman Islands) Limited.