



The Mounts

The Community Newsletter of Mount Wilson and Mount Irvine



June 2012

Welcome

In some wonderful news, Peter Raines married Linda Jackson on Friday 1st June in a delightful ceremony in the garden at *Merry Garth*.

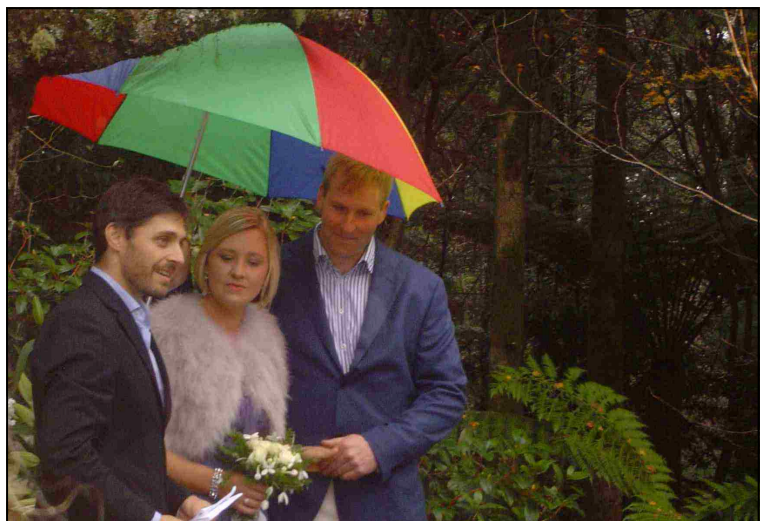
The weather was relatively benign for this time of year, though it is indeed unusual if a prominent event at Mt Wilson does not include at least some mizzle.

The wedding was conducted by marriage celebrant, Matthew Isaacs, who is an orienteering friend of Peter's,



Peter and Linda will be honeymooning in Europe for six weeks before returning to Mt Wilson to continue working on their Smiths Road property and finalising the Development Application for the construction of their home. At this stage, Linda will continue to work as a pharmacist in Sydney whilst plotting her move to Mt Wilson on a full-time basis.

Hearty congratulations from all in the villages .



Tim Gow Tel. 4756 2032 or 0412 133 559

e-mail: seftoncottage@gmail.com

You are invited to
the fabulous
Mount Wilson Yulefest
at the Village Hall
on Saturday 7th July 2012 at 6.30pm

RSVP by 27th June

Adults — \$40.00, children up to 14 — \$10.00

BYO drinks

**Tickets available from Milba Mewburn:
4756 2120 or milbamewburn@bigpond.com**

Please make cheques payable to BMCC

To make a donation of goods for the raffle please call

Ron Green 4756 2162 before 27th June

This is a fundraising event for the Village Hall.

MOUNT WILSON PROGRESS ASSOCIATION COMMITTEE NEWS

Christmas Party

Yes, it is a long time away but please note in your diary a change of date. December seems to be such a busy time so the committees of the Mount Irvine and Mount Wilson Progress Associations and the RFS have decided to hold our community gathering this year on Saturday 24th November, i.e. the last Saturday of November instead of the first Saturday of December, to see if it is more convenient for a larger number of people.

Silva Plana

Some work has been done to restore Silva Plana to its pre-filming condition. In fact, the MWPA Committee decided that additional work should be done to improve drainage by having a trench dug along the boundary with *Breenhold*. There had been one there many years ago but has been filled in over time. The soil dug up has been levelled over the reserve to raise it slightly. Grass will be seeded during spring.

Village Maintenance Issues

It has been brought to our attention that garden refuse, including soil, is being placed in bins in public reserves, notably Cathedral Reserve. They are as a result very heavy so we ask that people refrain from doing this and please ask those working for you not to dump such rubbish in the bins.

New Members

We are pleased to welcome two new members of the Progress Association, Rosie Walsh and Stephen List of *Chimney Cottage*. Their phone number is 4756 2022.

We are happy that Margaret Wickens and Bruce Knott are still in the village, having moved from *Chimney Cottage* into *The Post House*. The phone number there is 4756 2100

If you are a property owner or reside in Mount Wilson you are eligible to be a member of the Association. If you are not a member and wish to join please contact me. Membership fees make an important contribution to the work of maintaining our village and providing contact with residents through the production of such things as newsletters, the phone book and the website. The more members there are, the more we can do for you.

Mount Wilson Leisure Library

The library is open every Saturday morning from 10.00 to 11.00 unless the hall is booked for a function, so do drop in for a browse through the bookshelves. If you wish to come at another time or have books delivered, please contact me on 4756 2162 and this can be arranged. If anyone would like to assist in looking after the library for one hour a month on a Saturday morning please contact me, we would appreciate your help.

Moir Green (Secretary)

A Passion for Place

Alison Halliday and Joanne Hambrett advise that their stunning book on selected Mt Wilson, Mt Irvine and Mt Tomah gardens, *A Passion for Place*, has nearly sold out.

According to Alison, the last eighteen months in promoting and distributing the book has involved hard work, wonderful comments and varied pleasure.

At this stage, there are no plans of reprinting a second edition, so if anyone would like a copy — or even additional copies — of the book, please contact Alison at alisonhalliday@gmail.com or on her Sydney phone number 9389 1848.

Thoroughly recommended if you have not seen the book for some reason: it is a special treasure.

The Red Admiral – An exhibition of Patrick White's years at Mount Wilson

In 2012, the Mt Wilson and Mt Irvine Historical Society will celebrate the centenary of Patrick White's 28 May 1912 birth date by holding a year-long exhibition at the Turkish Bath Museum at Mt Wilson.

Patrick White spent his formative years as a young child at Mt Wilson in the 1920s and 1930s; the exhibition will highlight the impact of both the Australian natural environment and the influence of working class and wealthy society individuals and families that were to strongly shape him for the remainder of his life.

The story of Patrick White and his family at Mt Wilson in the 1920s and 30s (the so-called 'Golden Age' of Hill Station life in Australia) is rich in historical interest, and yet, remains well hidden to most people.

The project aims to heighten awareness of the formative years of White's life in an easily accessible and understood manner. The exhibition has been specifically designed not to be an academic treatment of his literature, nor does it require an understanding or appreciation of White, or his works.

The goal is to foster a recognition of a vital influence on White that has previously been ignored, or misunderstood, for many years, despite the amount of research undertaken on the most famous and renowned Australian author.

The title of the exhibition is taken from the name White used as a ten-year old. His first published pieces were about Mt. Wilson. The 'Red Admiral' was his favourite butterfly.

The exhibition consists of a series of posters designed by Jess Delbridge that detail the influence of Mt Wilson on Patrick White as an individual and a writer of international acclaim.

Additionally, a 25 minute film of White, and his relationship to Mt Wilson, has been produced and will be shown at the exhibition. The film features interviews with three Mt Wilson residents, Peter Valder, Mary Reynolds and Libby Raines, who all give a unique insight into White as a child.

Dr Bernadette Brennan and Dr Susan Lever, two respected academics from the University of Sydney and the Association for the Study of Australian Literature, and David Marr, White's biographer, are also interviewed in the film and explore Mt Wilson's influence on White's works.

The well-known Radio National journalist and producer, Rachael Kohn, conducts the interviews and White's first published pieces are read by Huw Evans. Both Rachael and Huw are long time residents of Mt Wilson.

In the film, David Marr proposes that Mt Wilson was central to a decision, and subsequent collaboration, that was to fundamentally change the direction and shape of Australian literature and culture.

The exhibition is to be formally opened on 11.00am—1.00pm, Sunday 17th June 2012 by the Governor of NSW, Professor Marie Bashir AC CVO at the Mt Wilson Village Hall. **This opening session is now fully booked out and unfortunately we can accept no more attendees at this session.**

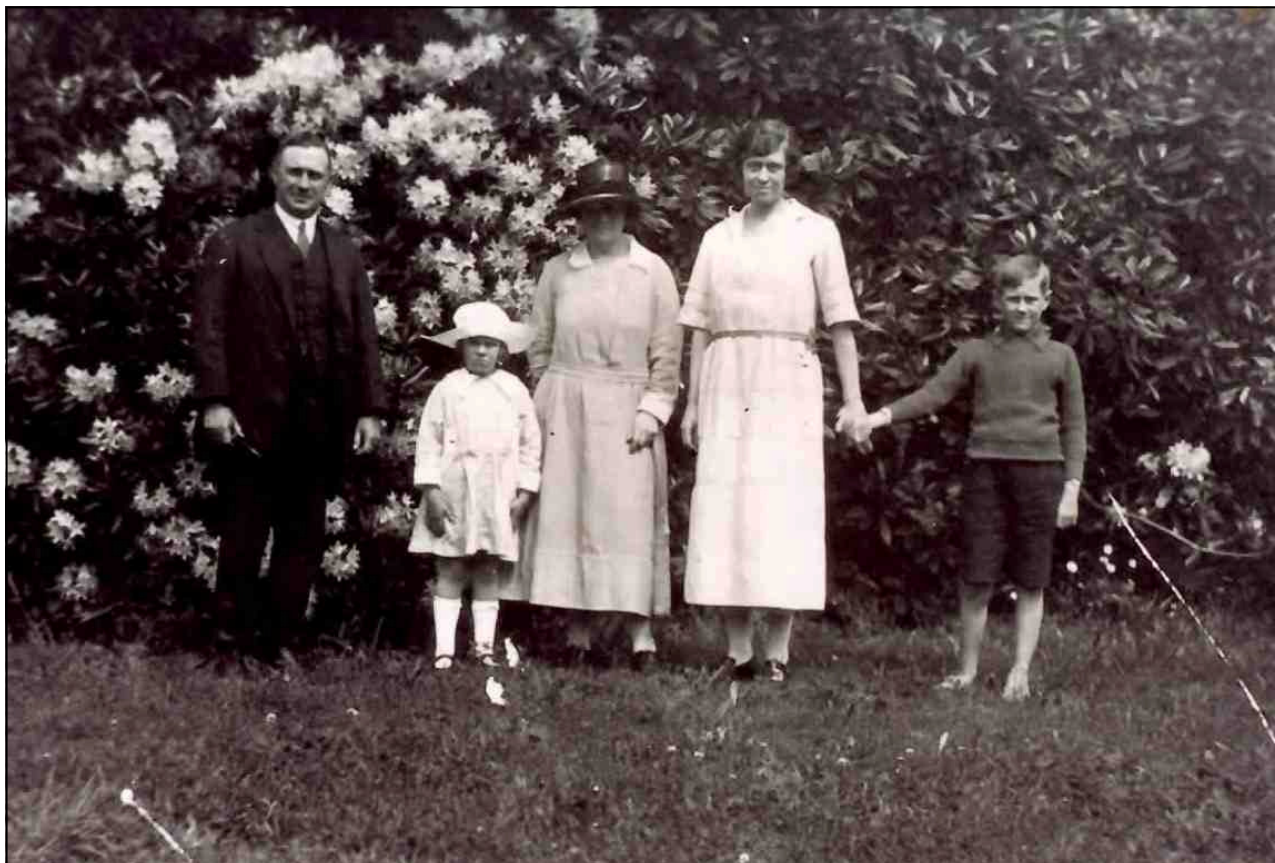
The exhibition will then be open to the general public at the Mt Wilson Village Hall on:

- Sunday 17th June, 1.00 – 4.00pm,
- Saturday 23rd and Sunday 24th June 12.00 – 4.00pm
- Saturday 30th June and Sunday 1st July 12.00 – 4.00pm.

The entry fee to the exhibition is by a gold coin donation to the Mt Wilson and Mt Irvine Historical Society. Tea and coffee will be available at the Hall.

The exhibition will then move to the Mt Wilson Turkish Bath in September through to May 2013. Details of opening hours during this period will be announced at a later date.

We do hope you will be able to attend the exhibition before its winter recess.



The Whites in the Wynstay garden shortly after their arrival at Mt. Wilson:
(left to right) Dick, Suzanne, Ruth, Mariamne Wynne and Patrick.

This picture is one of the many archival images held by the Mt Wilson and Mt Irvine Historical Society that have been used to research and illustrate the exhibition.

The Open Gardens weekend held by the Mt Wilson and Mt Irvine Historical Society on Saturday 28th and Sunday 29th April showcased the gardens of *Withycombe* and *Bisley*. The weekend, aided by very favourable weather, was an outstanding success. Almost \$10,000 was raised to help underwrite the costs of the Patrick White exhibition.

Many thanks to Barbara and Merrick Howes, and Joe and Diana Landsberg, from *Withycombe* and Graham and Beverley Thompson from *Bisley*, for allowing their gardens to be open to the public. Over 450 people took the opportunity to wander the two rarely-opened gardens.

Many thanks also goes to Helen and John Cardy who, along with many other helpers, ensured that the visitors were fed and watered in splendid style at the Village Hall, or who collected entrance fees and acted as guides to the village's visitors.

Mount Wilson and Mount Irvine Photographic Exhibition

Bev and Phil Woodman, two well known photographers and long-term friends of Mt Wilson and its environs, will be hosting a photographic exhibition at the Mt Wilson Village Hall on the weekend of October 27th and 28th.

Bev and Phil are both active members of the Red Bubble web site (www.redbubble.com) which displays the work of passionate amateur photographers from around the world.

Many Red Bubble members have already committed to exhibiting their works. However, the exhibition will be open to anyone who wishes to submit photographs or paintings.

An invitation is therefore extended to all to exhibit their images or artwork of Mt Wilson and Mt Irvine. Images will be accepted in most mediums such as matted print, framed print, laminated print or canvas.

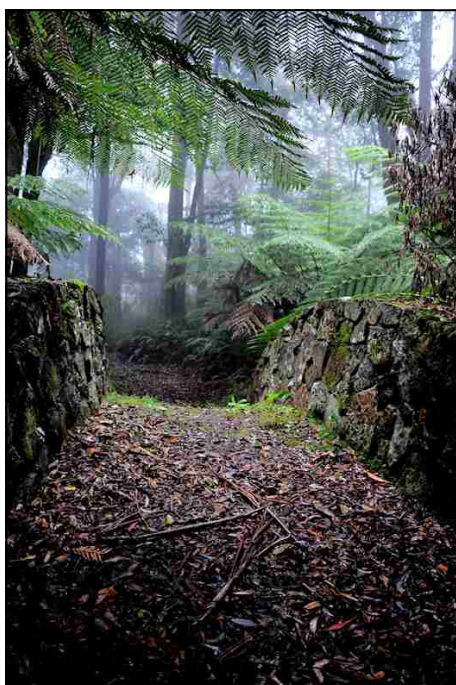
Closing date for entries is Friday 19th October. There is no fee to enter images in the exhibition.

The exhibition will be set up on Friday 26th October, with opening time at the Village Hall being 10.00am—4.00pm on Saturday 27th and 10.00am—3.00pm on Sunday 28th October.

The exhibitors have the option of making their works available for sale at the exhibition; 25% of any sales plus all door takings will be donated to the Mt Wilson and Mt Irvine Rural Fire Brigades.

Please contact Bev Woodman on 02 4946 8491 or 0438 494 684 or via email at bevwoodman46@gmail.com if you wish to submit an exhibit.

The weekend will be a fantastic opportunity to view the extraordinary talent of the many photographers who regularly visit the villages throughout the year.



Mt Wilson/Mt Irvine Rural Fire Brigade AGM 2012

Despite a chilly wet day, the Annual General Meeting of the local Brigade on 2 June saw a big turn out of locals from both villages. Among invited guests were Louise Markus MP, Federal Member for Macquarie, and Rosa Sage MP, State Member for Blue Mountains, Rob Vincenz, Operations Officer from RFS District Office representing Acting District Manager, David Hoadley, and Ron Gavin and Mick Garvey from NSW Ambulance Service.

We can all be very proud of our Community First Responders who were praised by Ron Gavin and Mick Garvey for their professionalism and commitment. All members of the Mt Wilson CFR team are trained to the equivalent level of an ambulance officer and have a great reputation within the NSW Ambulance Service. In monthly sessions run by ambulance officers, CFRs are trained to make primary assessments, take the patient's history, deliver a report to the Lithgow paramedics, and then lead the ambulance to the patient to ensure the fastest response. At present the only other CFR unit in NSW is based on Scotland Island in Pittwater.

The following Field and Administration Officers have been nominated unopposed for 2012/2013:

Position	Nominee Name
*President	David Howell
*Vice President	Henric Nicholas
*Treasurer	Susie Hope
*Secretary	Judy Tribe
*Captain	Beth Raines
*Senior Deputy Captain	Peter Raines
*Deputy Captain (1)	Barry Freeman
Deputy Captain (2)	Tim Gow
Deputy Captain (3)	David Howell
Deputy Captain (4)	Ian Docker
Deputy Captain (5)	Stewart Gunn
Catering	Moir Green
Community Engagement	Kim Gow
Equipment Officer	Stephen Dean
Fire Trails Coordinator	Peter Dempsey & Vic Zhukov
*Training	Graham Tribe

Those elected positions marked with * will form the executive committee.

ADDITIONS TO MT WILSON SHED

David Howell updated the AGM on progress with plans to build an addition to the Mt Wilson Fireshed. The proposed building, designed by architect Owen Haviland, will comprise garage space with attached communications room. At a meeting in March with Blue Mountains City Council to discuss the lodgement of the DA, Council requested an Asset Protection Zone be arranged with the Department of Lands who own the land surrounding the current shed. This led to the decision to apply for a transfer of the land's title from the Department of Lands to the BMCC. Rosa Sage MP has been negotiating on our behalf with the Department of Lands and negotiations are still under way. Transfer of title to BMCC allows for the relocation of the new addition to land behind the current shed, instead of the originally planned location by the communications tower.

Captain's Report to 2011/2012 AGM**Operations**

The Brigade attended 33 incident calls this year:

- 13 motor vehicle accidents
- 8 Community First Responder calls
- 1 rescue
- 5 trees
- 4 fires
- 1 oil spill
- 1 automatic fire alarm

Of course the major event this year was the wind storm on 5 July 2011. That day the Brigade was asked to respond to a fire at Mt Tomah but never got off the mountain due to fallen trees. Whilst we were clearing the trees we received a call to a medical emergency. Due to blocked roads, it took seven hours until the patient could be loaded into an ambulance. The devastation was widespread with every road being blocked at once, many being cleared only to have more trees fall. Mt Tomah Cat 1, Mt Wilson Pumper and Mt Wilson 1 were all stuck on the wrong side of trees and had to remain there overnight. Powerlines were down all over the mountain, a concrete pole below the Zig Zag was snapped, and power was cut for five days. The devastation to private properties was also huge.

But there were positives from the event including the assistance we received from Mt Tomah and Katoomba/Leura Brigades, BMCC, Endeavour Energy and contractors, especially with heavy machinery. The Mt Wilson Station was able to be self supporting with an electricity generator and gas cooking. Brigade members who assisted did a brilliant job in especially trying circumstances.

One of the major things we took out of the event was the need to improve communications with property-owners who are off the mountain at the time. Communication was especially difficult when the phone and power were out and all our local people were busy dealing with the unfolding incident, or stuck in their properties because of fallen trees and powerlines.

Training

We continue to hold training on the first Sunday of the month and every second month the Brigade joins with Bell and Mt Tomah for a combined training session. All Brigades find these joint training sessions valuable and enjoyable. Brigade members have completed a wide range of training available within the Blue Mountains including Basic and Advanced Firefighting, Crew Leaders, chainsaw courses, traffic control, Rail Corp familiarisation, Community Safety Assistant and First Aid Application.

Popular innovations this year include starting training an hour earlier to allow time for a catch up and a cooked breakfast before training, and a maintenance night on Fridays twice a month in summer and once a month in winter followed by dinner. Special thanks to Stephen Dean for organising and producing delicious catering which has added to the popularity of these training sessions.

Graham Tribe and Tim Gow have kept the website up to date and have included maps showing fire trails and water sources. Again, I encourage everyone to spend a bit of time looking at the website and the brigade section in particular – there is a tremendous amount of really useful information there.

The Community First Responder group continues to train every month with officers from Lithgow Ambulance Station. Thank you to Ron Gavin and Mick Garvey for your guidance.

Hazard Reduction

We had a favourable break in the weather which allowed us to complete hazard reductions at the Bogey Holes and Waterfall Creek. 17 Brigade members attended (some at both) with assistance from Mt Tomah, Fire & Rescue NSW, Glenbrook/Lapstone, Mt Riverview, Marrangaroo, Wentworth Falls and NPWS. The Wynnes Rocks and Mt Irvine / Knight Brown burns are still on the 'to do' list as well as the area between the Northern Fire Trail and Mt Irvine Rd. The Brigade has also been busy helping out at hazard reductions at Megalong Valley, Wild Dogs, Bell, and Winmalee.

Bush Run

Another very successful Willy to Billy Bush Run was held in August. Thank you to all the people who stood around in the cold at the Start or on one of the drink stations, and to the legendary scone makers. A huge thank you to Kim Gow for the tremendous work she has done liaising with Council, meeting with the Bilpin Brigade, organising the drink station volunteers and overseeing the entire operation. This year may be a little more of a logistical challenge with Silva Plana out of action due to a rather large mud puddle!

Community Engagement

Mt Wilson was chosen to be part of a pilot program to develop Community Protection Plans for vulnerable communities. Brigade members have been included in the development of these plans which will be rolled out for community consultation in the coming months. We hope to include this in the street meetings that were postponed due to the wind storm.

Thanks

Thanks to the executive, to David Howell, Judy Tribe, Susie Hope, Peter Raines, Henric Nicholas, Barry Freeman and Graham Tribe. Thank you to Moira Green in catering, Graham Tribe and Stephen Dean who are my 'go to' people, Kim Gow in Community Engagement and Peter Dempsey and Vic Zhukov overseeing the trails. Again I think we also need to thank the core people in this Brigade, who by happy circumstance live here but also have the burden of attending the majority of call outs. I thank them in particular – as we all should.

Beth Raines

Brigade Training Update

We have commenced a series of projects which combine training to improve our skills with building knowledge of our systems and local resources.

In April Tim Gow, Allen Hyde, Sarah Howell and Tom Bassett ran a session on radios and our local communications. These are vital in an emergency. The training session started with the types of radios we have and which system each uses. Then we spent time on just how to communicate using the standard protocols which is something many of us struggle with. After this we drove out of the Mt Wilson village to test the reach of the radio signal and to map the reach. We will need to do this several times using different transmitters to obtain good maps of the signal reach. We will then know when to make sure we have repeaters in an emergency.

In May we practised our search and rescue skills. Search and rescue operations are normally under the command of the police, but we need to be able to perform the tasks the police require from us. The session was led by Beth Raines and Peter Church. We covered theory and search and rescue techniques. After learning about the various search patterns we practised these techniques and simulated a rescue by carrying out a dummy body.

Recruitment is ongoing in the Brigade as we always need to expand the pool of members we can call on in an incident. A small number of reliable and willing locals respond to the majority of calls, so we encourage you to join up or involve your family members in your local Brigade.

For further information on any aspect of training, please contact Graham Tribe.

The Mt Wilson & Mt Irvine Community Website

April and May are the time of peak visitor activity on the community website, and also to the local villages. On 24th April 466 visits were made to the website by individual users, easily the highest day of visits we have experienced. Thankfully not all those people decided to come to the mounts on that day. But it illustrates the website is achieving its goal of encouraging the type of visitor we want.

On Friday 25th May Tim Gow led a training session on the use of Excel, which was aimed at the website editors so they can make good use of the download material available to them from the website. This will make the maintenance of contact details, membership records and property details easier to maintain and use.

Tim's session was a good learning experience for all of us. You always learn something, some new trick, from one of these sessions. The sharing of everyone's experience with a piece of software means the 'experts' learn as well.

Currently we are working on a revised local telephone book which will be generated from data in the website database. The way it works is a small program runs when you go to the new telephone book page, so there is a wait of a little over 5 seconds while the program generates the page.

The advantage is you will have a completely up to date phone book with the latest address, numbers and email address each time it is used. It should be complete and the format agreed in about a month when it will be available on the website. A new printed telephone book is also being developed

Graham Tribe



Lyrebirds, Yehudi Menuhin and Haiku

Anne Piggott has kindly submitted a Haiku piece, inspired by lyrebirds and a remarkable story about Yehudi Menuhin at Mt Wilson.

Haiku poetry follows a strict format—three lines of poetry of which the first line contains five vowels, the second contains seven vowels whilst the third and last line has 5 vowels.

I walked through coloured
leaves. Along the road the trees
seemed in senescence.

After the storm my
way was littered with stones, sticks;
a chaotic mess.

Over the wooden
bridge, flowing stream below, I
march to the forest.

Suddenly, my ear
turns to sound of violin
lifting on the breeze.

What madman plays now
in this inhospitable
wild forbidding place?

The melody played
on. I was mesmerized and
went to follow it.

Through the forest I
ran, following Pied Piper
and seeking the tune.

The branches hurt, my
arms bled, but I could not be
deterred. Where was he?

I found a clearing.
No madman at all. Only
a crooning lyre bird.

Dancing and signing.
A concert for his lady
hiding in the bush.

And the connection to Yehudi Menuhin?

Menuhin once stayed at *Shasta Lodge*, the cottage then owned by William Holman, the NSW Premier from 1913 to 1920. A driving force in the creation of the Australian Labour Party, Holman has been described as NSW's most brilliant Premier.

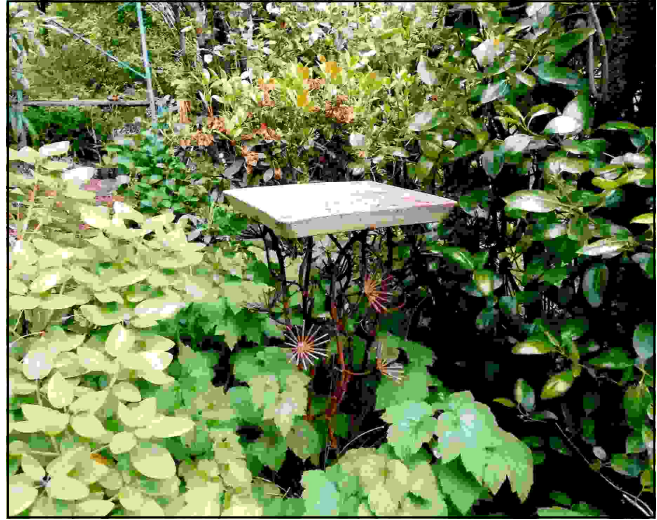
During his short stay at Mt Wilson, Menuhin practiced his violin. According to Syd Kirk, for weeks following his departure, the local lyre birds imitated the violin perfectly.

This episode was confirmed by Yehudi Menuhin's son, Krovi, when he stayed with the Piggotts at *Yengo* in August 1994.

Scott Leonard, Blacksmith

Next time you drive past the Apple Bar in Bilpin, look out for the weather vane and corrugated iron green apple on its roof.

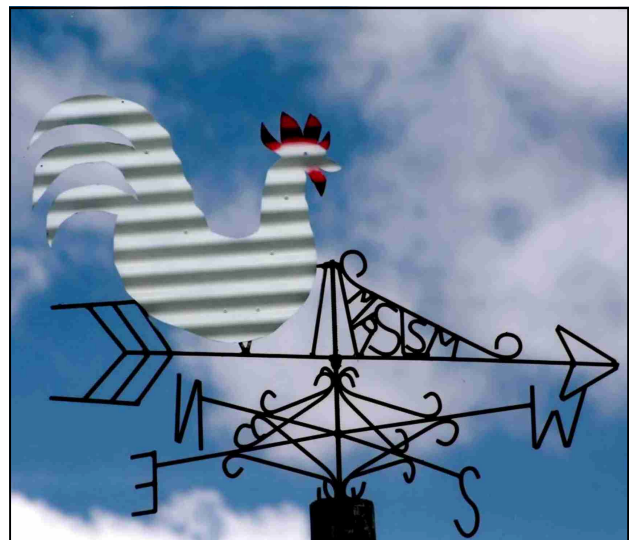
Both the vane and 'iron' apple are the work of local artist Scott Leonard of *Sylvan Close*. Although his works are indisputably artistic, Scott may be more comfortable with the titles of welder, metalworker or blacksmith; perhaps a combination of all of the above would best fit. Scott fashions recycled materials, predominately metal, into both functional and ornamental objects designed to live in the garden. He uses barbed wire, copper piping, metal plates and rods to form functional artworks such as bird baths, hoops to hold hellebores, tripods for staking delicate plants, weather vanes, ornamental gates and garden seats. One seat uses iron bark wood from the Pilliga forest mounted on a leaf spring claimed from a Land cruiser.

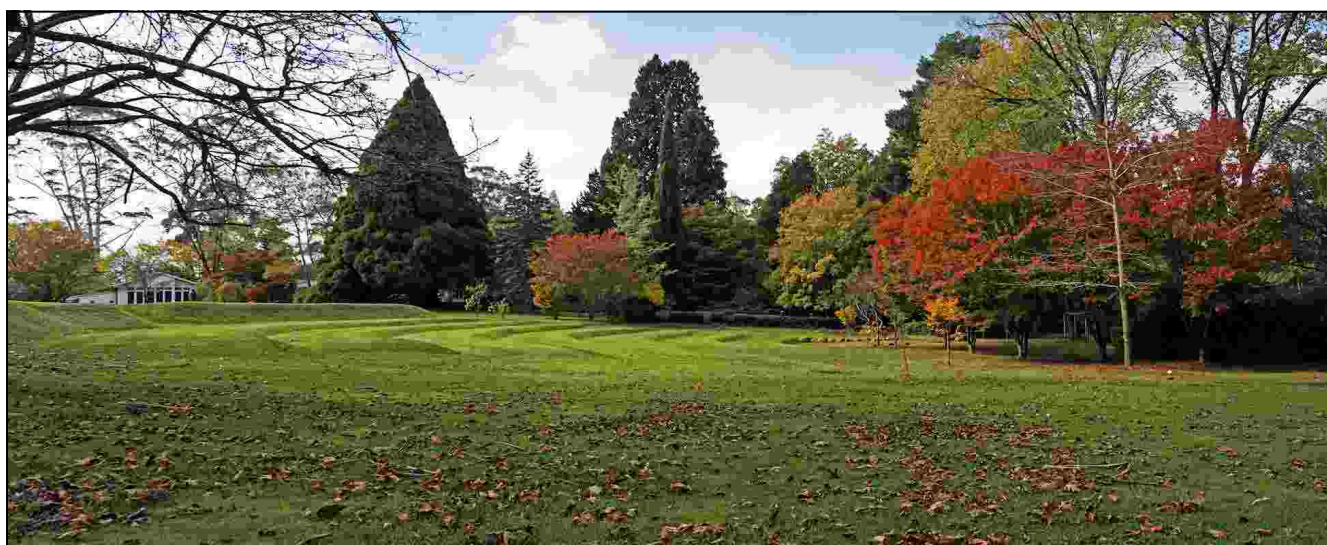


A stroll through the garden provides glimpses of a small army of delicate wire dragonflies resting in bird baths and appearing to be feeding on plant beds. My sense of whimsy was sent into overload upon being introduced to Fred; he is a giant dragonfly lying face down on a lawn, his legs are in the workshop and his wings lie beside him in wait for his metamorphosis. Although he looks quite capable of flight, Fred weighs well over 100 kilos.

Many of Scott's pieces reflect his love of the rustic, rural and organic. He has spent time as a jackeroo; he has studied and teaches horticulture. His range of handcrafted pieces are all made to last a lifetime, many giving aged metal a second life. No two pieces are the same. He can even turn his hand to chainsaw carving, turning logs into furniture.

Scott's works have been sold at Parkers of Turramurra, North Manly Nursery and Palmland at Belrose. He welcomes viewings of his work at Sylvan Close on appointment on 4756 2011, (mob) 0421 986 199, or email metalartgarden@gmail.com.

Robyn Scrivener



Withycombe in late autumn: captured by Bev Woodman during the Open Gardens weekend.

Community Calendar

June	Fri 8th 9.00–12.00 Bush Care— Wynne Reserve	Sun 10th 3.00pm Mt Wilson Church Service	Fri 15th Bushwalking Group— Leura Forest	Sun 17th 1.00 –4.00pm Patrick White at Mt Wilson exhibition, Village Hall
Sat 23rd 12.00 –4.00pm Patrick White at Mt Wilson exhibition, Village Hall	Sun 24th 12.00 –4.00pm Patrick White at Mt Wilson exhibition, Village Hall	Sat 30th 12.00 –4.00pm Patrick White at Mt Wilson exhibition, Village Hall	July	Sun 1st 12.00 –4.00pm Patrick White at Mt Wilson exhibition, Village Hall
Sat 7th 6.30pm Yulefest, Mt Wilson Village Hall	Sun 8th 9.00am RFS Training Mt Wilson Shed	Sun 8th 3.00pm Mt Wilson Church Service	Fri 13th 9.00–12.00 Bush Care— Wynne Reserve	Fri 20th Bushwalking Group— Hassans Walls
August	Sun 5th 9.00am RFS Training Mt Wilson Shed	Fri 10th 9.00–12.00 Bush Care— Wynne Reserve	Sun 12th 3.00pm Mt Wilson Church Service	

Suggestions, comments or contributions warmly welcomed!